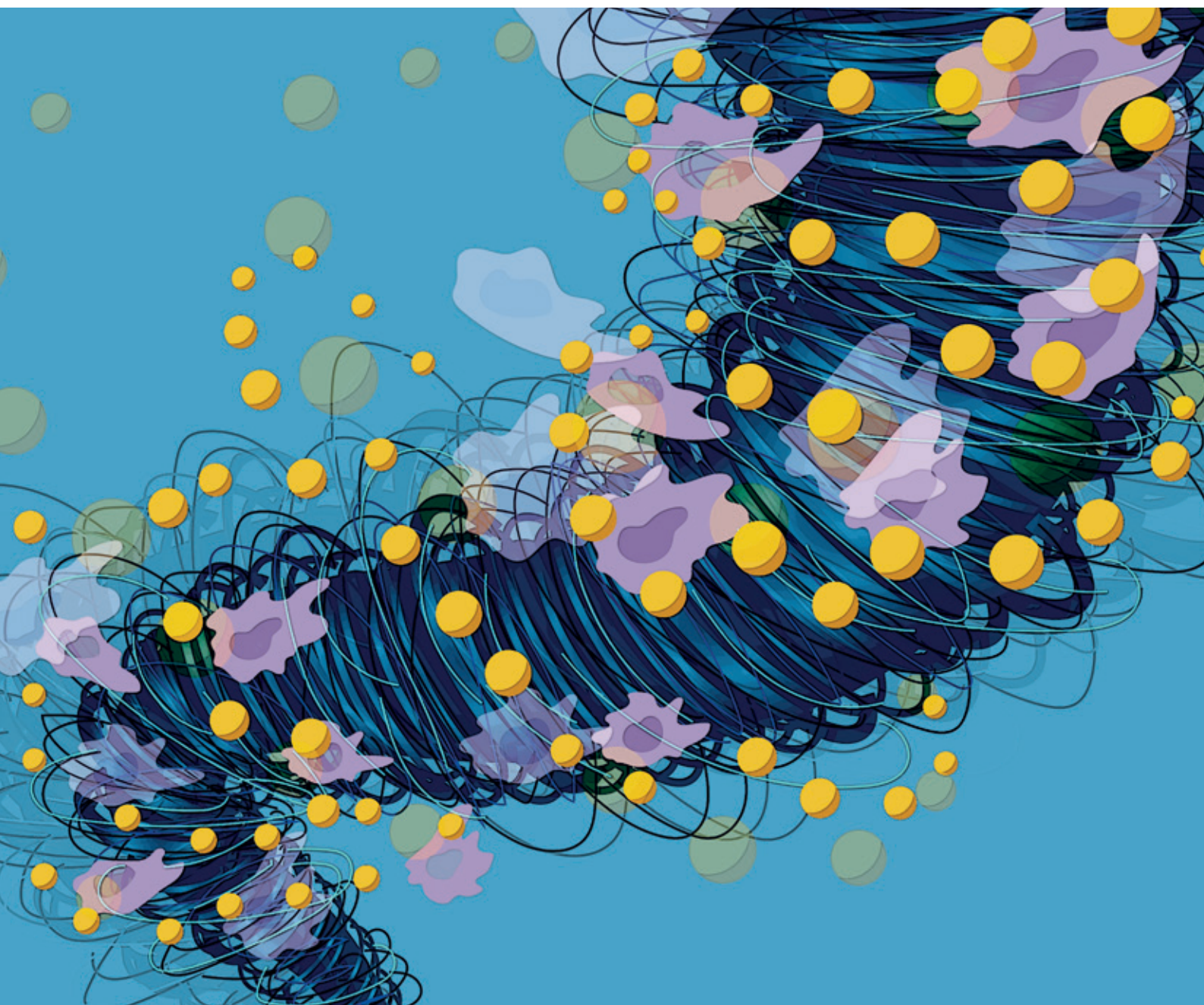


nature reviews rheumatology



ULTIMATE TREATMENT
GOALS AND STRATEGIES
FOR RA

Immunogenicity of
biologics
Determinants and implications

In Ankylosing Spondylitis & Rheumatoid Arthritis



INTACEPT
Etanercept 25 mg/0.5 mL & 50 mg/mL PFS

No. **1** Etanercept
Brand of India

Indigenously synthesised at



- Least Immunogenicity¹
- Established fast clinical response²
- High incidence of remission & lowest AEs³
- Dose tapering - A cost effective option⁴

Flexible Dosing Advantage



Mono pack advantage | Only calibrated PFS | Affordable TNFi

Enhance patient compliance



Scan QR code on PI to view demo
video in 11 regional languages

For more information visit :

www.intacept.in

1. Drug Metab Pers The.2020 Nov 6;/dmdi.ahead-of-print/dmdi-2020-0139/dmdi-2020-0139 2. Ann Rheum Dis, Volume 78,supplement 2, year 2019, page A896
3. J Clin Rheumatol.2019 May 20. doi:10.1097/RHU. 0000000000001093 4. [http://caod.oriprobe.com/articles/49059362/maintenance of the therapeutic efficacy of etanercept in active ankylo.htm](http://caod.oriprobe.com/articles/49059362/maintenance%20of%20the%20therapeutic%20efficacy%20of%20etanercept%20in%20active%20ankylo.htm)

Advisory Board

Gunnar B. J. Andersson

Rush University Medical Center, USA

Xenofon Baraliakos

Rheumazentrum Ruhrgebiet, Germany

Francis Berenbaum

AP-HP Saint-Antoine Hospital, France

Gerd-Rüdiger Burmester

Humboldt University and Free University of Berlin, Germany

Leslie J. Crofford

Vanderbilt University Medical Center, USA

Michael Doherty

University of Nottingham, UK

Gary S. Firestein

University of California, San Diego, USA

Sherine E. Gabriel

Rutgers University, USA

Steffen Gay

University Hospital of Zürich, Switzerland

Robert D. Inman

University of Toronto, Canada

David A. Isenberg

University College London, UK

Cees G. M. Kallenberg

University of Groningen, Netherlands

Ho-Youn Kim

Catholic University of Korea, Republic of Korea

Lars Klareskog

Karolinska Institute/Karolinska University Hospital, Sweden

Margreet Kloppenburg

Leiden University Medical Center, The Netherlands

Nancy E. Lane

University of California School of Medicine, Davis, USA

Chak-Sing Lau

University of Hong Kong, Hong Kong

Zhan-Guo Li

Beijing University Medical School People's Hospital, China

Matthew H. Liang

Harvard University, USA

Peter E. Lipsky

Charlottesville, USA

Professor Sir Ravinder N. Maini

Imperial College London, UK

Fiona McQueen

University of Auckland, New Zealand

Eric F. Morand

Monash University, Australia

Seza Ozen

Hacettepe University, Turkey

Janet Pope

University of Western Ontario, Canada

William Robinson

Stanford University School of Medicine, USA

Yehuda Shoenfeld

Sheba Medical Center (affiliated with Tel Aviv University), Israel

Josef S. Smolen

Medical University of Vienna, Austria

Rene Toes

Leiden University Medical Center, The Netherlands

Cornelia M. Weyand

Stanford University School of Medicine, USA

Kazuhiko Yamamoto

University of Tokyo, Japan



Follow us on Twitter

For the latest news from the journal and beyond:
@NatRevRheumatol



Nature Reviews on Facebook

For regular updates on new content across all the Nature Reviews journals <https://www.facebook.com/NatureReviews>



Sign up for e-ALERTS

Get monthly e-mail alerts to the content of this journal — sent FREE to your inbox — by registering online <http://www.nature.com/register>



Web feeds

Receive the latest content as an RSS newsfeed <http://www.nature.com/nrrheum/info/newsfeeds.html>



Advance online publication

We operate an advance online publication (AOP) service for authors and readers to view the latest articles published online ahead of print <http://www.nature.com/nrrheum/articles>



Web focuses and collections

A selection of articles on a related theme, with content ranging from Research Highlights through to Reviews and Perspectives <http://www.nature.com/nrrheum/focus/index.html> & <http://www.nature.com/nrrheum/collection/index.html>



Article series

A special series of articles that explores a specific theme and comprises Reviews and Perspectives that are published consecutively over a period of time <http://www.nature.com/nrrheum/series>



Posters and multimedia

Providing visual and audible overviews of hot topics <http://www.nature.com/nrrheum/posters> & <http://www.nature.com/nrrheum/multimedia>



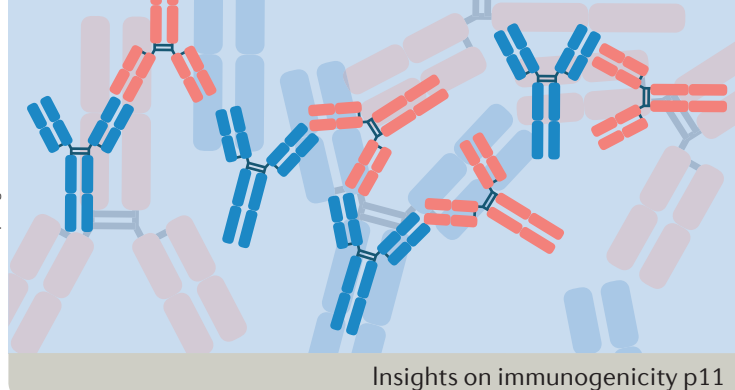
Conferences

You can meet the editors of *Nature Reviews Rheumatology* at some of the meetings listed on our conferences page <http://www.nature.com/nrrheum/about/conferences>

Journal scope

Nature Reviews' basic, translational and clinical content is written by internationally renowned basic and clinical academics and researchers and targeted towards readers in the biological and medical sciences, from postgraduate level upwards. While intended to be read by practising doctors, researchers and academics within a specialty, we aim to make all our articles accessible to readers working in any biological or medical discipline.

In-depth Reviews present authoritative, up-to-date information on a topic, placing it in the context of a field's history and development. Topical discussion and opinions are proffered in Perspectives, Comments and News & Views articles, and in the Research Highlights section we filter primary research from a range of specialty and general medical journals.



Insights on immunogenicity p11

CONTENTS

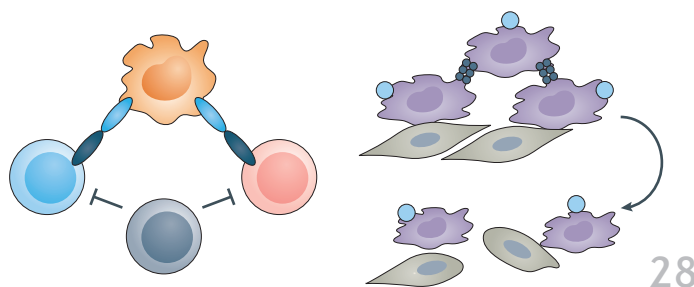
Selected articles from Vol. 17, No. 2 & 3

REVIEWS

- 11 Immunogenicity of biologic agents in rheumatology**
Vibeke Strand, Joao Goncalves and John D. Isaacs
 The immunogenicity of a biologic agent can have clinical consequences in terms of response to therapy and risk of adverse events. In this Review, the authors summarize the latest data on the immunogenicity of biologic agents for various rheumatic indications.
- 28 Why remission is not enough: underlying disease mechanisms in RA that prevent cure**
Georg Schett, Yoshiya Tanaka and John D. Isaacs
 For the past two decades, remission has been the focus of treatment strategies for rheumatoid arthritis (RA). This Review addresses the differences between remission and cure in RA and the underlying factors ('drivers') that trigger chronic inflammation and prevent cure.

PERSPECTIVES

- 38 Key opinion leaders — a critical perspective**
Jose U. Scher and Georg Schett
 In this article, the authors critically appraise the current model of opinion-based academia–industry interactions, and advocate for a realignment towards partnerships that foster innovation and knowledge.
- 44 The impact of COVID-19 on rare and complex connective tissue diseases: the experience of ERN ReCONNET**
Rosaria Talarico et al.
 In this Perspective article, members of the European Reference Network on Rare and Complex Connective Tissue and Musculoskeletal Diseases discuss clinical and organizational challenges in this community caused by the COVID-19 pandemic and what lessons might be learned for the future.



Nature Reviews Rheumatology (ISSN 1759-4790 [print]; 1759-4804 [online]) is published monthly by Springer Nature Limited, The Campus, 4 Crinan Street, London N1 9XW, UK. Airfreight and mailing in the USA by agent named WN Shipping USA, 156-15, 146th Avenue, 2nd Floor, Jamaica, NY 11434, USA. Periodicals postage paid at Brooklyn, NY 11256. US Postmaster: Send address changes to Springer Nature, WN Shipping USA, 156-15, 146th Avenue, 2nd Floor, Jamaica, NY 11434, USA. Printer and mailer: Printforce (Culemborg, The Netherlands).

Copyright © 2021 Springer Nature Limited. All rights reserved. For the actual version of record please always check the online version of the publication. No part of this publication may be reproduced, stored in a retrieval system, or transmitted in any form (electronic or otherwise) without prior permission from permissions@nature.com.

www.nature.com/nrrheum

COMPETING INTERESTS POLICY Authors of articles in *Nature Reviews Rheumatology* are required to declare any competing interests. For details, please see www.nature.com/authors/policies/competing.html

ORCID We support the use of the persistent digital identifier ORCID to make content and researchers more discoverable and visible. For more information, go to <https://orcid.org/>

ENHANCED PDFS All email addresses and websites are live links in the online PDFs; bookmarks are also provided for easy navigation.

ADVANCE ONLINE PUBLICATION We operate an advance online publication (AOP) service for authors and readers to view the latest articles published online ahead of print.

E-ALERT SIGN-UP Get FREE monthly e-mail alerts to the content of this journal by registering online. Or sign up to receive the latest content as an RSS newsfeed by visiting www.nature.com/nrrheum

SUPPLEMENTARY INFORMATION Articles may include online-only supplementary text or display items, which may be referenced separately from the article.

2-YEAR IMPACT FACTOR 16.625

2-YEAR MEDIAN 13

For more information on journal metrics, please see www.nature.com/npg_company_info/journal_metrics.html

COMMENT

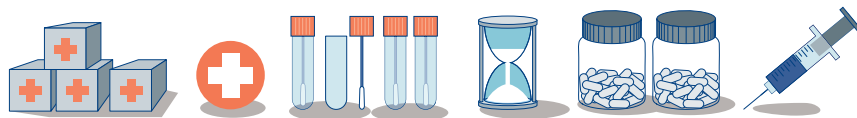
- 1 Removing barriers and disparities in health: lessons from the COVID-19 pandemic
Emily Sirotych and Jonathan S. Hausmann

RESEARCH HIGHLIGHTS

- 3 EXERCISE Exercise exerts anti-inflammatory effects on muscle via the JAK–STAT pathway
- 4 OSTEOARTHRITIS Targeting the EGFR pathway shows promise for OA
- GENETICS New insights into RA genetics from GWAS meta-analysis
- 5 IMMUNOMETABOLISM Metabolic defect causes invasive phenotype in RA T cells
- PHARMACOLOGY Gut microbiome could predict drug response in RA
- 6 OSTEOARTHRITIS Adipose tissue triggers OA
- AUTOIMMUNITY Getting to the root of the anti-inflammatory effects of ginger

NEWS & VIEWS

- 7 AUTOIMMUNITY Unravelling the complex genetic regulation of immune cells
Paula S. Ramos
- 9 TARGETED THERAPIES JAK inhibitors and VTE risk: how concerned should we be?
Stanley B. Cohen



44

EDITORIAL & PRODUCTION OFFICE

The Campus, 4 Crinan Street, London N1 9XW, UK
Tel: +44 (0)20 7833 4000 | Email: nrrheum@nature.com
www.nature.com/nrrheum

CHIEF EDITOR Sarah Onuora
SENIOR EDITORS Joanna Collison, PhD; Jessica McHugh, PhD
SENIOR ART EDITOR Susanne Harris
PRODUCTION EDITOR Fleur Stevens
PROOFREADER Emma Jobson
SENIOR EDITORIAL ASSISTANT Felicity Tournant
PRODUCTION CONTROLLER Natalie Smith
CROSS-JOURNAL EDITORS Katharine Wrighton (Team Leader), Claire Ashworth, Caroline Barranco, Rebecca Kelsey, Isobel Leake and Grant Otto (Seniors), Joseph Willson (Associate)
MANAGING EDITOR Liesbet Lieben
PROOFREADING SUPERVISOR Lewis Miles
EDITORIAL ADMINISTRATION MANAGER Andrea Monica
MANAGING PRODUCTION EDITOR Jenna Johnston
HEAD OF OFFICE ADMINISTRATION Laura Lee
HEAD OF PRODUCTION Derna Brown
ART DIRECTOR Samantha Whitham
CREATIVE DIRECTOR Kelly Krause
EDITORIAL DIRECTOR Mina Razzak

VP EDITORIAL, NATURE JOURNALS Ritu Dhand
PUBLISHING DIRECTOR, NATURE JOURNALS Ruth Wilson
VP NATURE RESEARCH & BMC James Butcher
CHIEF JOURNALS OFFICER Alison Mitchell
EDITOR-IN-CHIEF, NATURE JOURNALS Magdalena Skipper
CUSTOMER SERVICES www.nature.com/help
PERSONAL SUBSCRIPTIONS subscriptions@nature.com
REPRINTS www.nature.com/reprints
ADVERTISING & SPONSORSHIP www.nature.com/advertising
INSTITUTIONAL LICENCES www.springernature.com/licensing
PRESS OFFICE press@nature.com
MARKETING marketing@nature.com

MANAGEMENT OFFICES

SPRINGER NATURE LONDON The Campus, 4 Crinan Street, London, N1 9XW, UK. Tel: +44 (0)20 7833 4000
SPRINGER NATURE NEW YORK One New York Plaza, Suite 4500, New York, NY 10004-1562, USA. Tel: +1 212 726 9200
SPRINGER NATURE ASIA-PACIFIC Shiroshima Trust Tower 5F, 4-3-1 Toranomon, Minato-Ku, Tokyo 105-6005 Japan. Tel: +81 3 4533 8050
A list of other offices can be found at www.nature.com/npg/_contact/offices.html

DISCLAIMER

The information and material contained in this publication is for educational, research and information purposes only, not to address any particular or individual requirements. While every care is taken to see that no inaccurate or misleading data, opinions or statements appear in this journal at time of publication, it is possible that such information and material may be incorrect or out of date (science and our understanding is constantly evolving) and hence should be considered as part of the wider scientific record and not be considered as a definitive standalone statement or as a substitute for appropriate professional judgment. You should independently check any information and material and use your own good judgment before doing or not doing anything on the basis of such information or material. To the fullest extent permitted by law, the journal publisher, employees, officers and agents accept no liability whatsoever for the reliance on the content or the consequences of any inaccurate or misleading data, opinion or statement. Readers are advised that the new methods and techniques involving drug usage and treatments described within any Springer Nature journal should only be followed in conjunction with the drug manufacturer's own published literature.

Manage

PMO & OP in Men

The World's 1st Denosumab Biosimilar

Rózel

Denosumab 60 mg/mL PFS

Regress Resorption, **Regain** Bone Strength

10500+
Patient
experience

- ✓ Double BMD gain as compared to BSPHs^{*1}
- ✓ BMD gain at all critical sites in long term use of 10 years²
- ✓ Superior patient compliance³
- ✓ Drug of choice in special population like CKD, T2DM & malignant patients^{4,5,6}



Scan QR code on PI to view demo video with subtitles in 11 regional languages

For more information visit :

www.rozel.in

1. J Clin Endocrinol Metab, August 2016;101(8): 3163-3170 2. Lancet Diabetes Endocrinol. 2017 Jul;5(7):513-523 3. Osteoporos Int (2012)23:317-326 4. Clin J Am Soc Nephrol 13:962-969 5. Medicine (Baltimore).2019Nov;98(47).doi:10.1097/MD.00000000000018067 6. The Adv Med Oncol (2011);3:233-243 * BSPH: Bisphosphonates

In Active RA & PsA

Choose
IntaJac

Tofacitinib 5 mg Tablets

Targeted Action... The **RAL** way

Indigenously
Synthesized

BY



Raw material to finished product



Simply **RAL**... Simply Effective... Simply Safe

In Rheumatoid Arthritis

MABTAS RA
Rituximab 500 mg/50 mL vial for IV use

Assured Quality, Positive Outcomes

10K +
Patient
experience



Quality & Efficacy....Testimony of your Experience

•Biomolecules 2020,10,1002;doi:10.3390/biom10071002 •Lancet. 2013 Feb 9;381(9865):451-60.doi:10.1016/S0140-6736(12)61424-X-Epub 2013 Jan 5



INTAS PHARMACEUTICALS LIMITED

Corporate House, Near Sola Bridge, S.G. Highway, Thaltej, Ahmedabad – 380054, Gujarat, INDIA.
Ph. No. : 079-61577000, Website : www.intaspharma.com